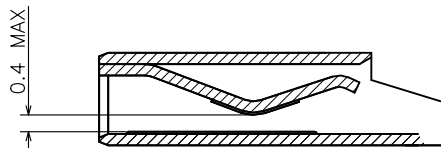
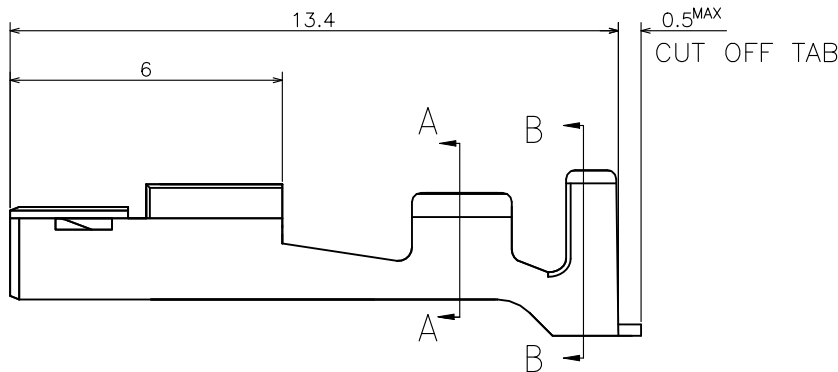
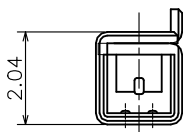
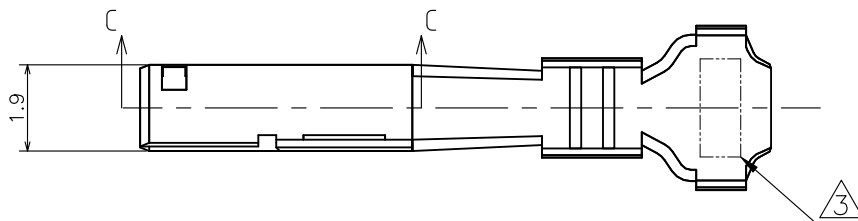
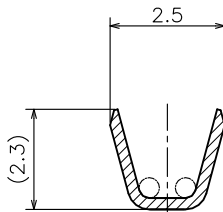


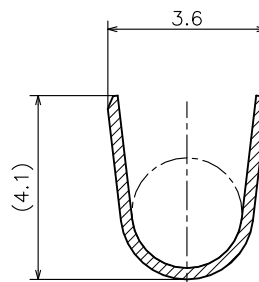
REVISIONS 変更					
P	LTR	DESCRIPTION	DATE	DWN	APVD
	A2	REVISED PER ECR-24-203147	20MAR2024	SC	D.Z



SECT C-C



SECT A-A



SECT B-B

- 注)  
 1.一般公差：±0.25  
 2.材料：錫めっき済 銅合金

- NOTES)  
 1.GENERAL TOLERANCE: ±0.25  
 2.MATERIAL: PRE-TIN COPPER ALLOY  
 3. TRADE MARK: AMP OR TE

RELEASED FOR PUBLICATION

ALL RIGHTS RESERVED.

© COPYRIGHT - TE Connectivity Ltd.

THIS DRAWING IS UNPUBLISHED.

1565079-1

PART NUMBER

WIRE RANGE  
 抱合電線断面積 0.3-0.9mm<sup>2</sup> (AWG#22-18)

INSULATION DIA  
 被覆外径 ø1.5-2.7mm

DIMENSIONS:  
 単位： 耗  
 mm

DWN A.OISHI 30 MAY.'02

MATERIAL 材料 SEE NOTE

FINISH 仕上 SEE NOTE

TOLERANCES UNLESS OTHERWISE SPECIFIED:  
 一般公差

CHK M.SHINDO 30 MAY.'02

APVD M.SHINDO 30 MAY.'02



TE Connectivity Ltd.

PRODUCT SPEC  
 製品規格  
 108-5810

NAME 名称  
 GRACE INERTIA CONNECTOR 3.5  
 REC CONTACT(L)

APPLICATION SPEC  
 取付適用規格  
 114-5306

SIZE A4 CAGE CODE 00779 DRAWING NO 番号 1565079

RESTRICTED TO  
 -

WEIGHT -  
 CUSTOMER DRAWING

SCALE 尺度 6:1 SHEET 1 OF 1 REV A2

